

WUPPERTAL Schwebebahn, Germany

Fall Protection for the Third Rail

Client: WSW mobil GmbH, Bromberger Straße 39-41, 42281 Wuppertal

Contractor: WSW mobil GmbH, Hr.Thiele, Bromberger Straße 39-41, 42281 Wuppertal

Construction Manager: Detlef Kamp & Kolja Ludorff, Phn: +49 202 569-xxxx

Contract Amount: 85.000 €

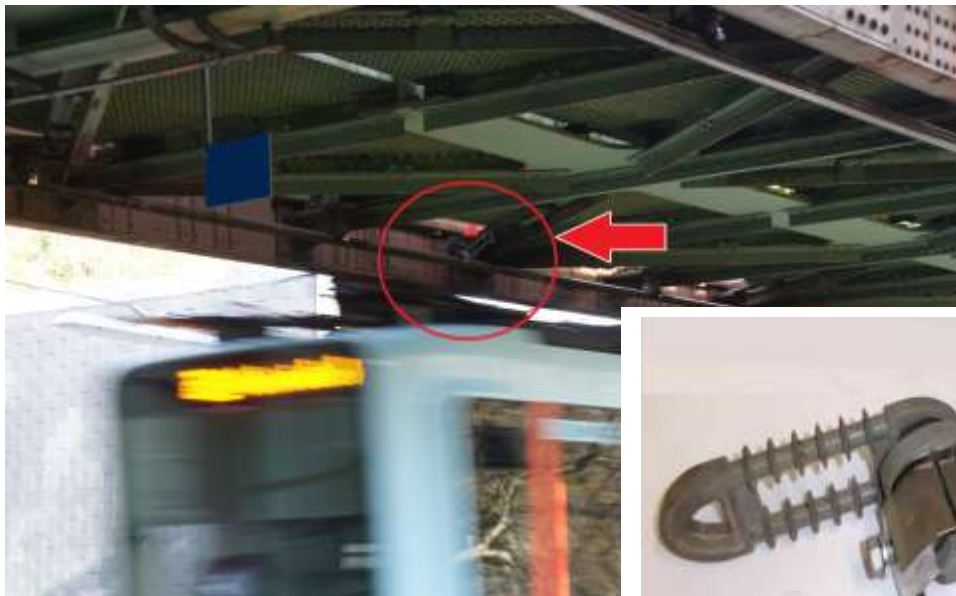
Construction/Delivery Period: January - August 2019

Project Description:

Due to an accident on the Wuppertal Suspension Railway (fracture of a rail bracket), a concept had to be developed for the fall protection of the third rail. This was implemented using specially installed brackets and tension insulators.

Main Services / Deliveries:

- Collaboration on the technical solution for third rail fall protection
- Consulting
- Delivery of 5,000 tension insulators



Ivema-Fahrleitungsbau GmbH
Dessauerstr. 60
45472 Mülheim an der Ruhr
Germany

Copyright © Ivema 2019. (Urheberrechte sind zwingend zu beachten)